

Installing the MODE in a Sega Dreamcast with a bit-district MODE Mount for Sega Dreamcast

Step 1: Remove the top shell from the Sega Dreamcast

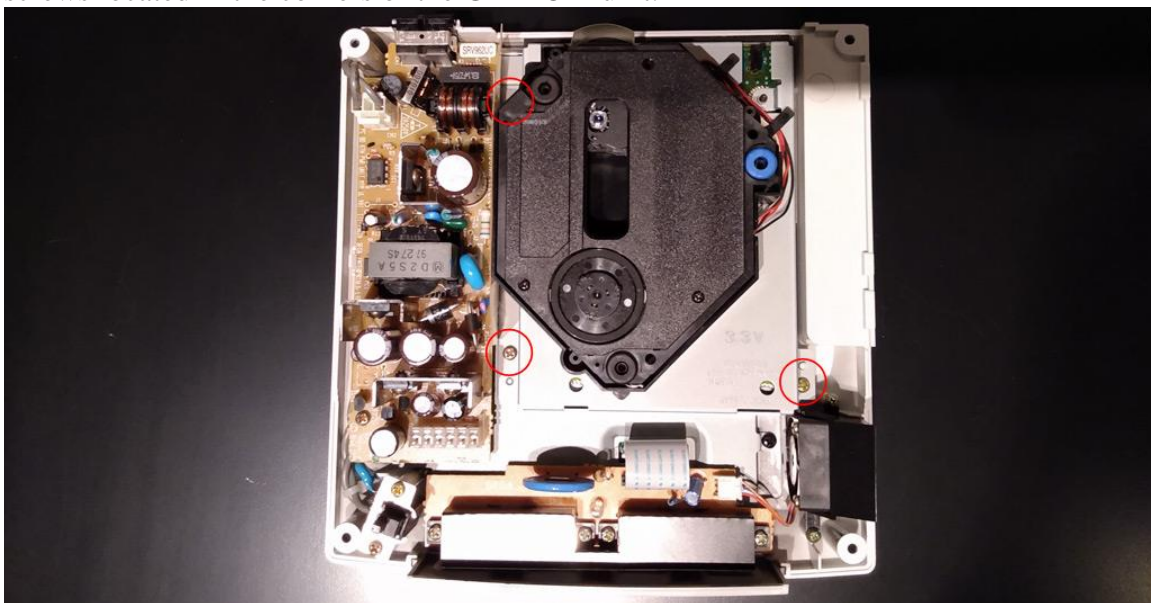
With all cables unplugged, remove the network adapter from the Dreamcast console. Turn the console upside down and then remove the 4 screws located in the corners.



Once you have removed the 4 screws the upper shell should easily separate from the rest of the console. Put the screws and the upper shell aside for now.

Step 2: Remove The GD-ROM Drive

With the upper shell removed you now have access to the GD-ROM Drive. Remove the 3 screws located in the corners of the GD-ROM unit.

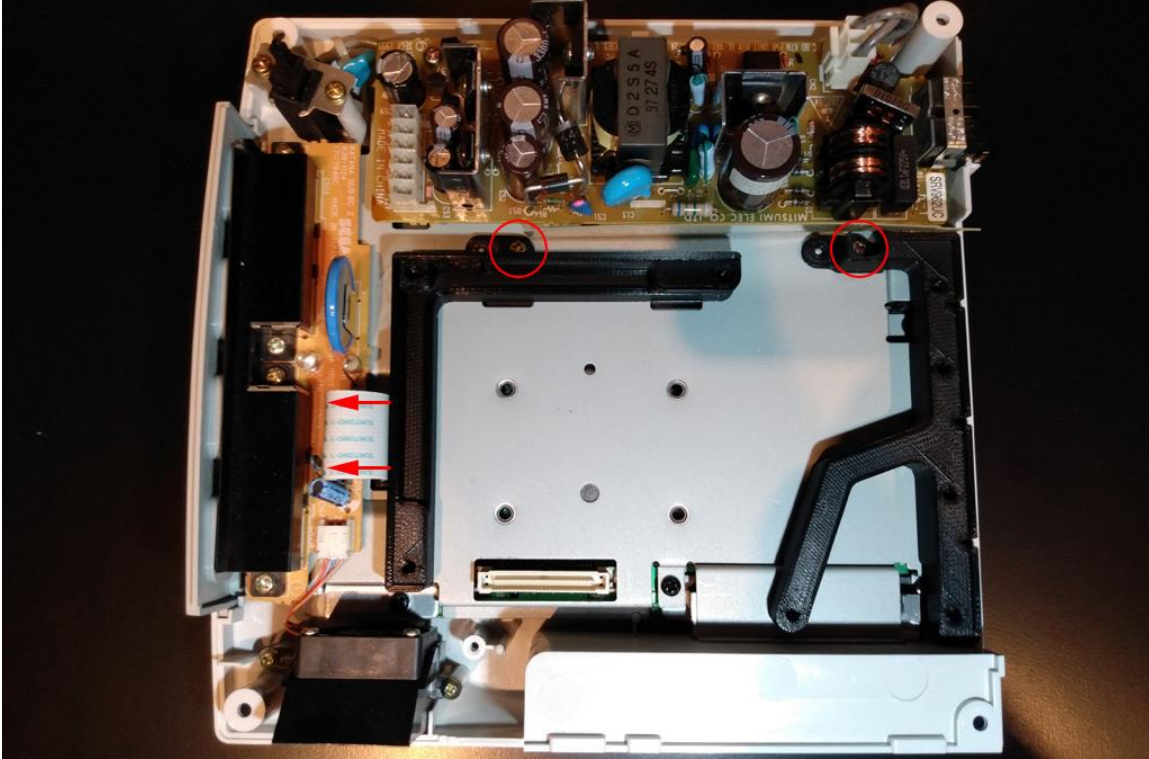


Once you have removed the 3 screws you should be able to pull the GD-ROM unit straight up to remove it from the Dreamcast. There is a connector near the corner by the cooling fan that will produce some resistance but it should remove with only gentle force.

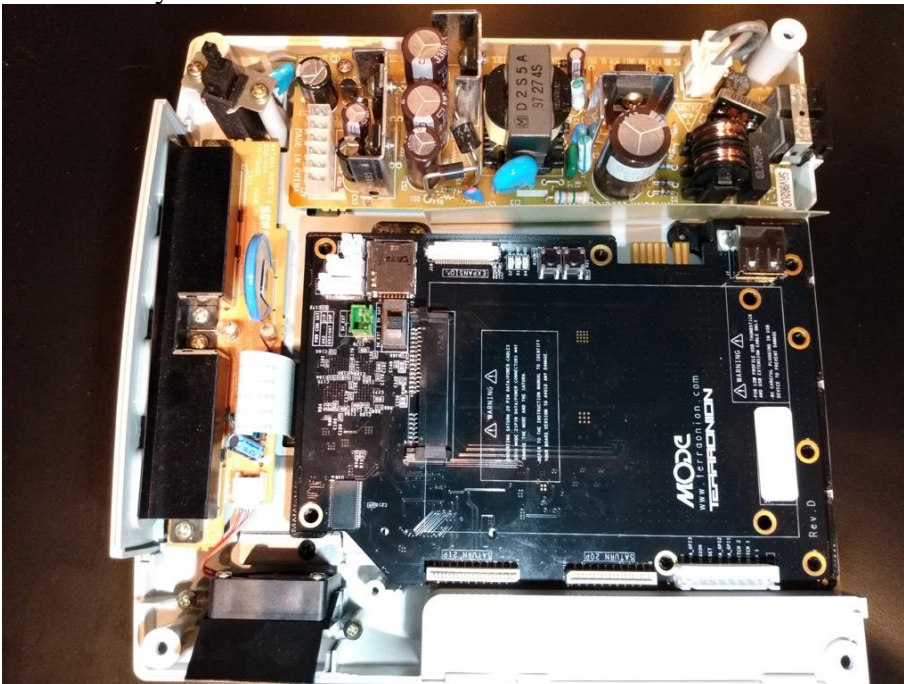
You will no longer need the GD-ROM unit but we will be re-using the screws.

Step 3: Install the bit-district MODE PCB Mount for Dreamcast

With the GD-ROM unit removed push the control panel ribbon cable slightly towards the front of the console. Next, place the bit-district MODE PCB Bracket for Dreamcast as shown below re-using the same screws and screw-holes that held your GD-ROM unit to the metal plate. Do not tighten the screws all the way, you will want them slightly loose so we can adjust the mount perfectly.



With the screws in the mount slightly loose and the ribbon cable pushed out of the way place the MODE into the mount and connector nudge the mount as necessary until the mode is fully seated into the mount and the connector.



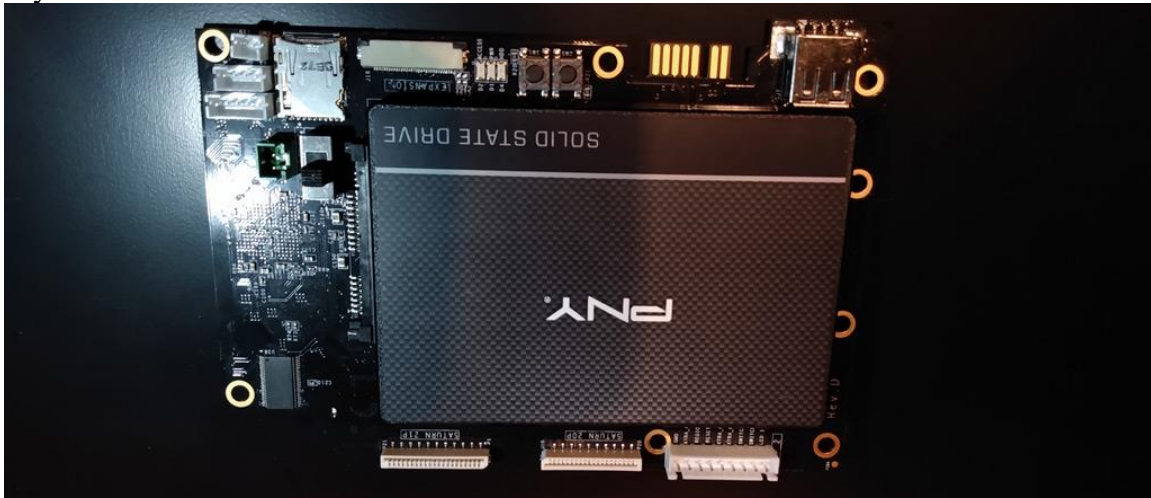
With the MODE Fully Seated tighten the screw by SD card slot, remove the mode, and then tighten the other screw.

Step 4: [OPTIONAL] Install Your SATA Hard Drive or USB Drive

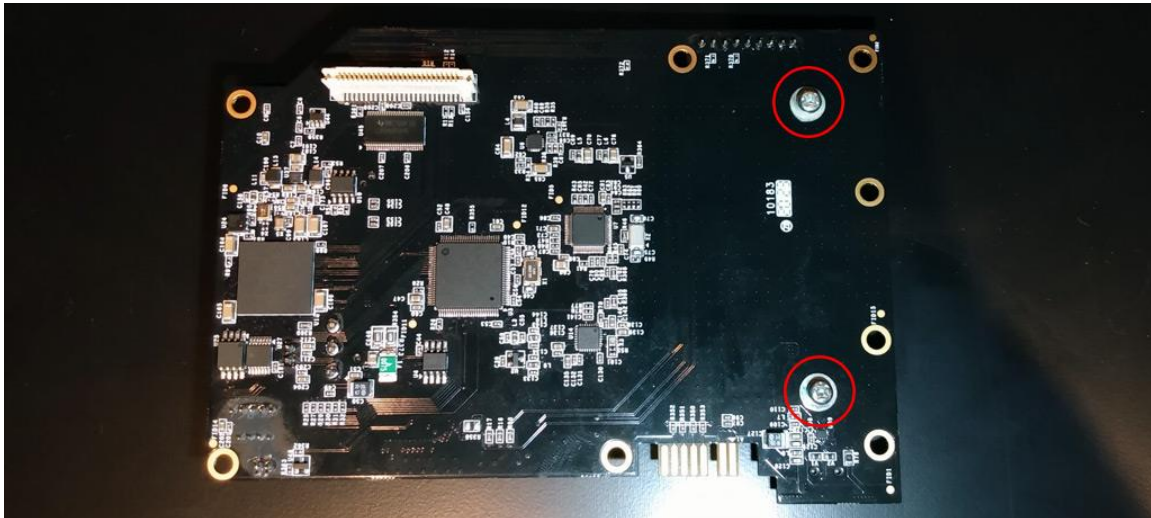
If you have an SATA Hard Drive or USB Drive that you wish to install do this now.

If you have a USB Drive then simply plug it in and move on to Step 5.

If you have a SATA Drive then slide the Drive into the connector on the MODE.

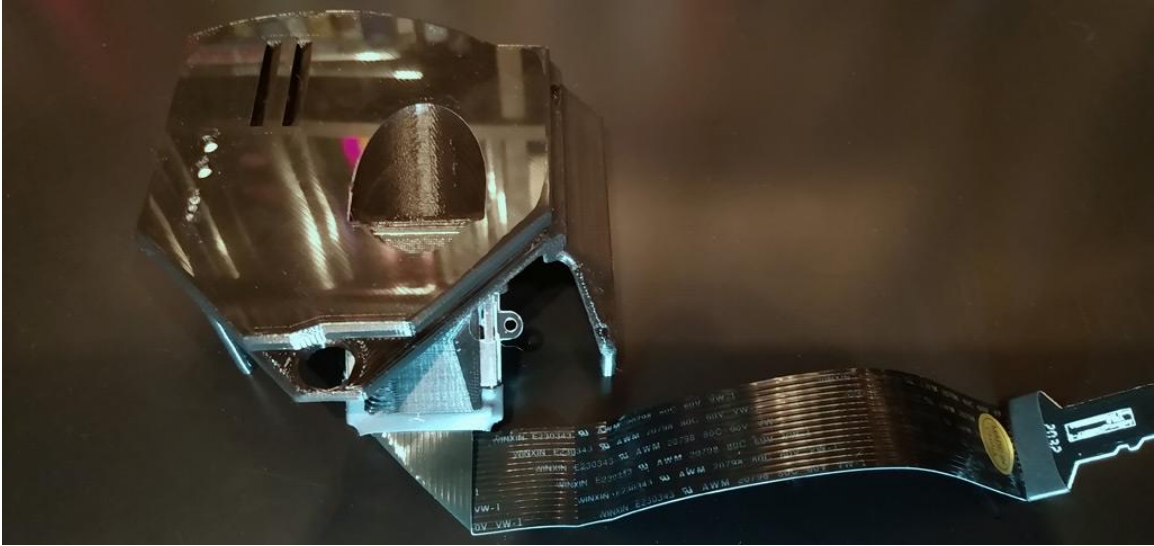


Once the drive is in place turn the MODE upside Down, Then you can install 2 of the 3mm screws that should have come with your SATA Drive to secure your drive to the MODE PCB.

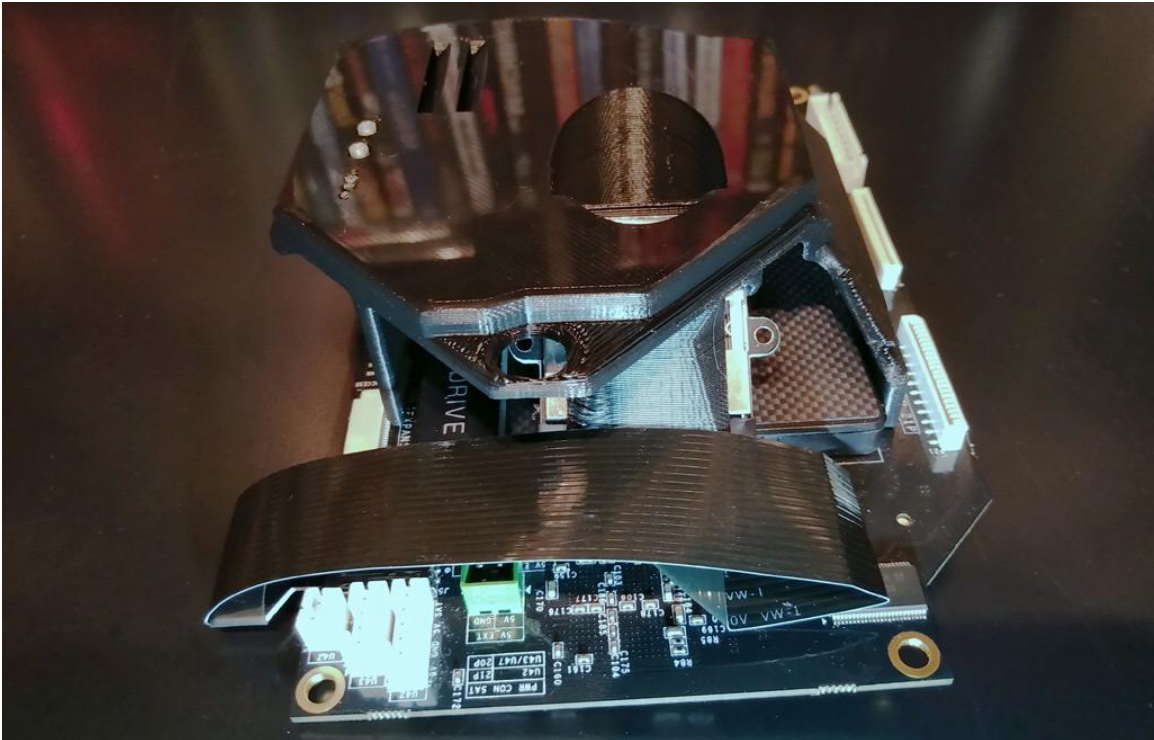


Step 5: Install the SD Card Mount onto the MODE

Fold the ribbon cable from the bit-district SD Card Mount under and to the right as shown.



Ensure that the button extensions are installed into the bit-district SD Card Mount and place this assembly on top of the MODE PCB; then install the ribbon cable into the Micro SD Card Slot as shown.



Ensure that the ribbon cable is folded as close to the Micro SD card adapter as possible as this will aide in clearance against the Dreamcast Power Supply.

Step 6: Install the MODE onto the bit district MODE PCB mount.

With the bit-district SD Card Mount assembly on top of the MODE PCB place this into the Dreamcast ensuring that the connector on the bottom is lined up and fully seated and that the MODE PCB fully seats into the bit-district MODE PCB Mount.



With the MODE fully seated into the connector and the PCB mount you can place the upper shell back on top of the Dreamcast console. You will want to open the lid so that you can more easily align the bit-district SD Card Mount with the opening in the shell.



With everything aligned and in place you can close the Dreamcast's lid, turn it back upside down and re-install the 4 case screws and network adapter.

ENJOY YOUR FULLY INSTALLED MODE!