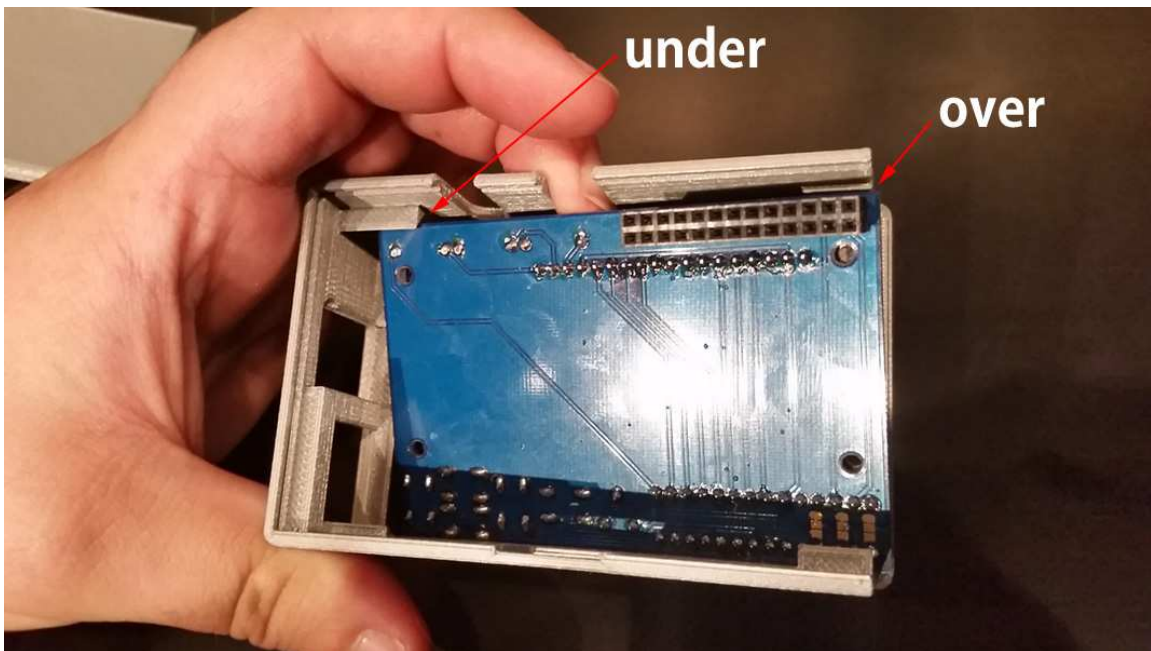


Pi v1 LCD Keypad Case assembly

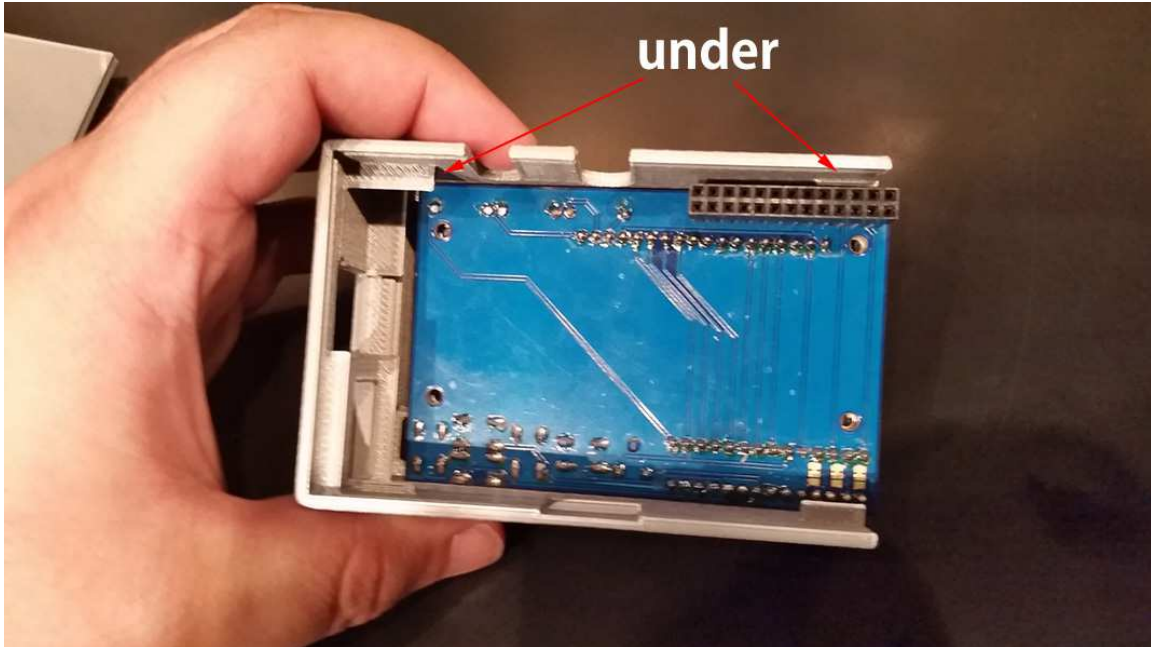
Step 1: remove the bottom of the case by sliding it off and ensure that the buttons are installed in the button holes. If your electronics are already assembled separate your LCD keypad PCB from the Pi PCB and remove the SD card from the Pi as well.



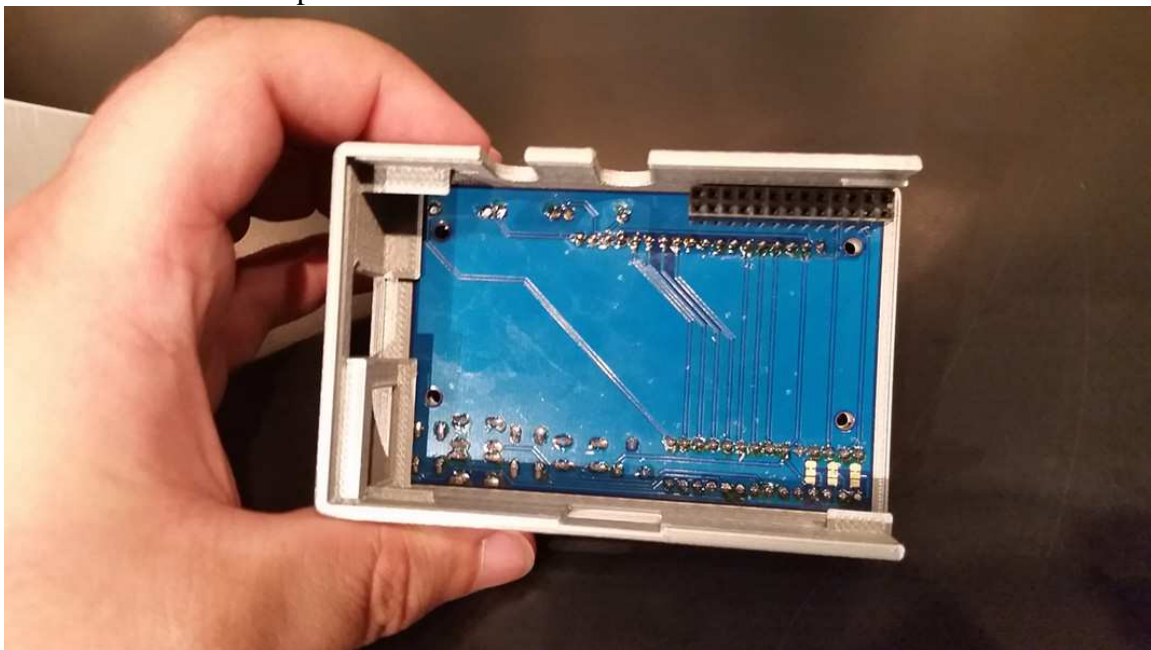
Step 2: Slide the LCD keypad PCB in from the side at an angle making sure to tuck the upper corner of the USB side under the support on the case as shown:



Step 3: once the LCD keypad is in the position shown in step 2 push the lower right corner down as far as it will go and the top right corner should naturally drop down as well.



Step 4: once all 4 corners are below the case supports seat the LCD keypad PCB all the way to the left (you may need to lift it up slightly to fully seat) and then lower the right side until it clicks into place as shown:



Step 5: insert the Pi PCB at an angle such that the USB ports and the audio port are slotted into their holes first. Then lower the right side of the PCB making sure the pins seat properly into the connector.



Step 6: slide on the case bottom from the side and push it all the way in until it clicks into place.



Step 7: you can now re-install your SD card and begin using your Pi.